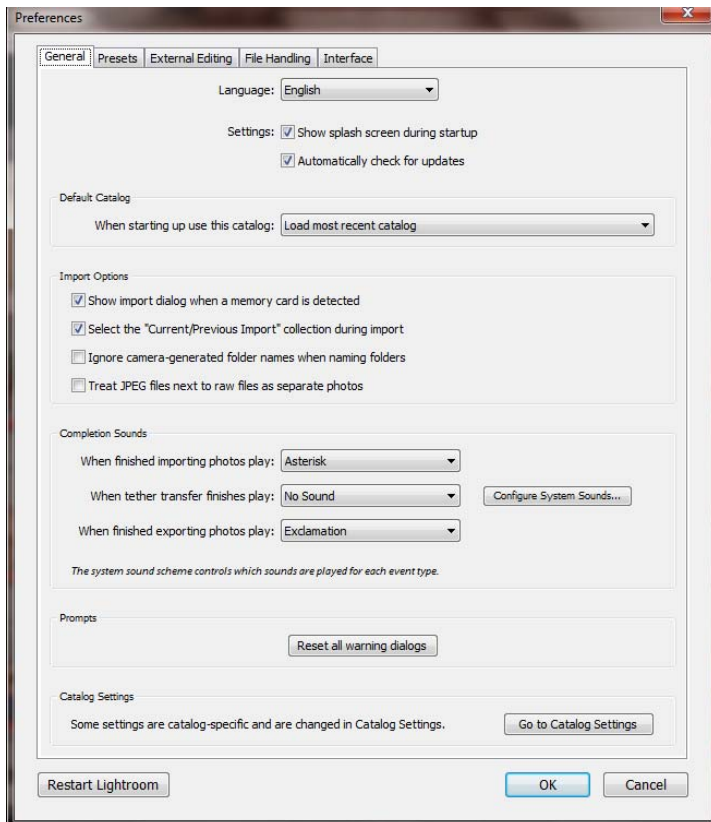


LR

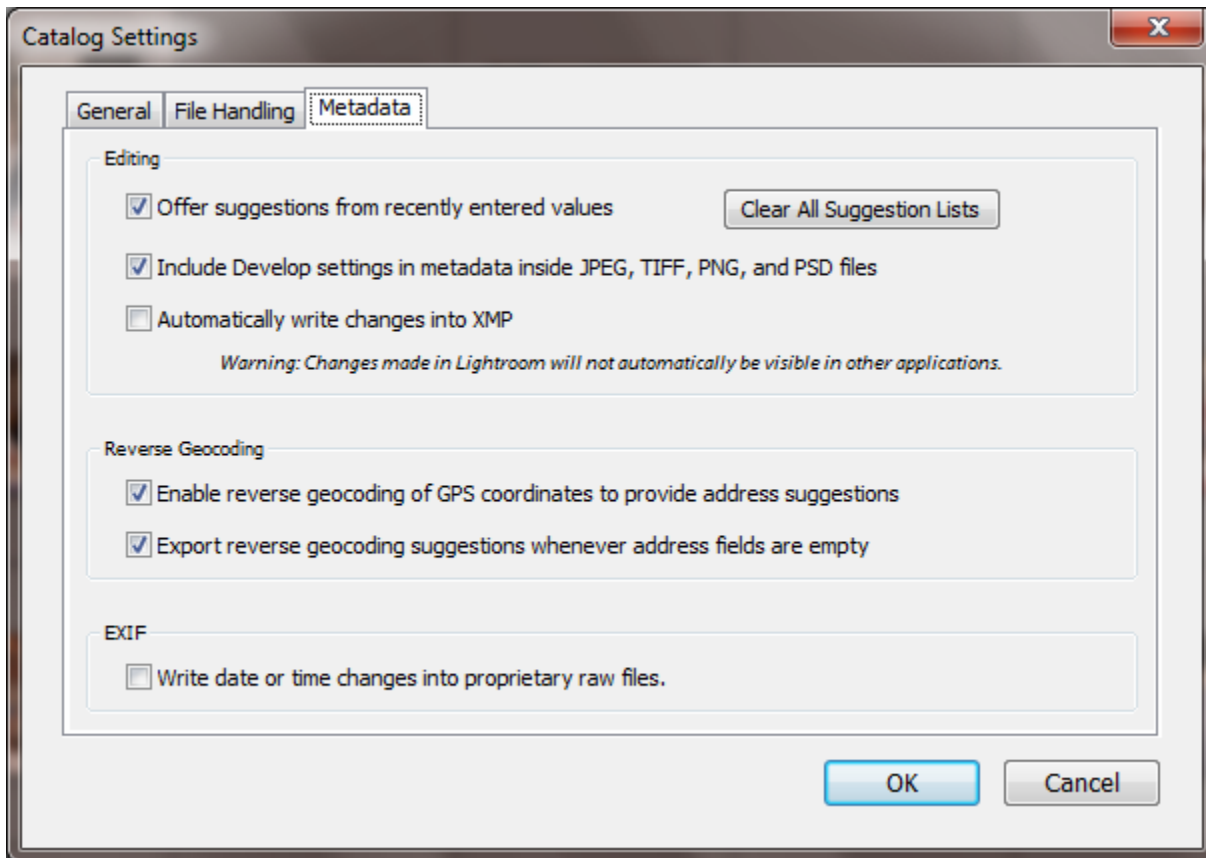
Setup

General

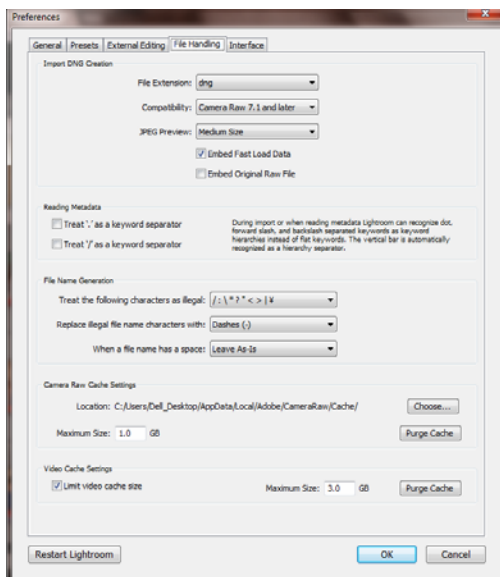
(Edit->Preferences)



- Already set up after view KellyOne Video
- If you shoot both Raw & Jpg, only the RAW will show up in LR, so if shoot both, only import the RAW files.
- NOTE: If you open a RAW file into another program from the Explorer Menu (EX. Bridge) and you make changes, LR will NOT recognize the changes made. All changes must be in LR



- Already setup after viewing the video in KelleyOne
- NOTE: If you want to be able to open a RAW file in another program and you want the changes to carry over, check (Automatically write changes into XMP file (separate file)
- However, you can use those other applications (Bridge, PS, etc), if you launch them from LR.
- Another problem with the box checked is that it will SLOW Lightroom down considerably.
-



- Use DNG file format.
- Could be important in the future
- When importing photos, select Copy as DNG (top of screen box)

- If the photos have already been imported
 - o Select All
 - o Go to Library on File Menu
 - o Go down Convert to DNG and convert